

A MESSAGE FROM TIM

Our slogan here at Galcom is “multiplying missionary impact through audio technology”. Using radio, one pastor can reach a larger geographical area and a larger population in a moment than going door-to-door for a year. Radio is simply the most efficient way to share the Gospel!

Speaking of multiplying, I hope you are good at your 13 times tables, because the Galcom team just grew by two more people, bringing our staff total to 13. We are very pleased to introduce Kevin and Lynn Baker, who over the years have served with TWR, Wycliffe, and FEBC. With



Peru, 2019

and independent pastors we serve around the world. It includes YOU!

You are a vital and integral part of the Galcom ministry. Your prayers and your giving are an exponential factor in the work to which God has called us all. You empower us to do more than 13 people could. We are taking your contribution and multiplying it by the number of our

YOUR PRAYERS AND YOUR GIVING ARE AN EXPONENTIAL FACTOR IN THE WORK TO WHICH GOD HAS CALLED US ALL. YOU EMPOWER US TO DO MORE THAN 13 PEOPLE COULD.

Kevin joining our tech team installing towers and antennas, and Lynn representing Galcom and recruiting short-term mission team members, we expect to help more pastors and missionaries around the world, installing more stations and distributing even more radios.

Now for more advanced math. How are you with exponents? The Galcom ministry does not just consist of the 13 staff members. It includes the over 40 volunteers who assemble the radios. It includes the dozen or so men that travel with our tech team to install stations. It includes the nearly 300 different affiliate mission agencies

volunteers and affiliates, enabling YOU to reach more people as you obey God’s call to “go into all the world and make disciples”.

13⁴⁰ is a really big number! Together we are reaching a lot of people with the Gospel through radio.



With you
in Christ’s service,

A handwritten signature in black ink, appearing to be 'T. Whitehead'.

Tim Whitehead
Executive Director

RESPONDING TO THE CALL

AN INTERVIEW WITH KEVIN AND LYNN BAKER

Galcom is excited to introduce new missionaries on our team! Here is a bit of their story, as Tim Whitehead sat down with the Bakers to learn more.



What was the call into missions for you?

Kevin: I was a tool and die maker. One Christmas, as I making Cadillac pulleys, I thought, “What am I doing for the Lord? Is it my calling to provide some wealthy guy a Cadillac to buy as a Christmas gift for his wife?” God was speaking to Lynn as well; we both separately felt a pull to move into ministry.

Lynn: I was always interested in missions and wanted to care for people, so I trained as a nurse. Kevin and I married, we were raising three boys, and we both loved our jobs and were active in our local church. But I just felt that God was asking me to do more. My concern was that we didn’t have Bible school training.

What mission did you begin with first, and what were your jobs there?

Kevin: We started with Trans World Radio. We were sent to the island of Bonaire, one of TWR’s largest AM-station sites with nine arrays. I was just doing odd jobs, a bit of welding and such. One day they came to me and said, “How are you with heights?”

I answered, “I don’t know.”

Then they said, “Well, we want you to rig up this fishing line on a 120-foot tower.”

I joked, “I climbed bigger trees than that as a kid!” That was the start of my work as a tower-rigger.

What is the highest tower you’ve climbed?

Kevin: 550 feet.

What was the next ministry you were involved in?

Lynn: In 2000, we joined Wycliffe Bible Translators of Canada. We were support staff for a few years in the office, then we ended up going to Cameroon to help with the orientation of new missionaries. I was also the home-school teacher for the kids there!

Kevin: Once we had only one son still at home, we decided to look for a long-term overseas project. Our son said, “Yeah, let’s go for it!” We did a short stint in Cameroon, then heard of the need for riggers in Saipan with Far East Broadcasting. I was still young enough to climb towers, so we did it. These ministries cooperated closely with each other, and we were seconded to wherever the need was greatest. We did three months in Bonaire, then six months in Guam, another three in Bonaire, and so on.

I’m sure there have been challenges as a missionary. What has been hardest for you?

Lynn: Leaving our family and friends behind for long periods of time has been difficult at times.

What has been the most rewarding thing about being a missionary?

Kevin: When you think about radio reaching 100 million people with the Gospel, and you have had a part in that, it makes it all worthwhile.

Lynn: And our partners who have prayed and supported us, they’re a part of that!

Now Galcom will be sending you on short-term trips to install towers around the world, Kevin; and Lynn, you will be helping with our distribution trips and training the people.

What is your biggest prayer request?

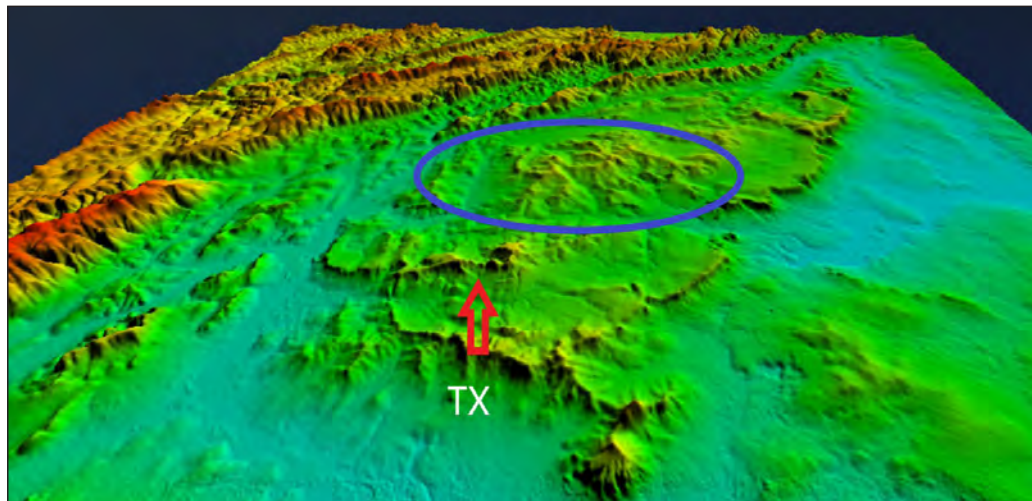
Kevin: We came home to be closer to our family; pray that we can build and grow those relationships.

Lynn: Also, that we will learn our jobs well at Galcom as we partner with other people.



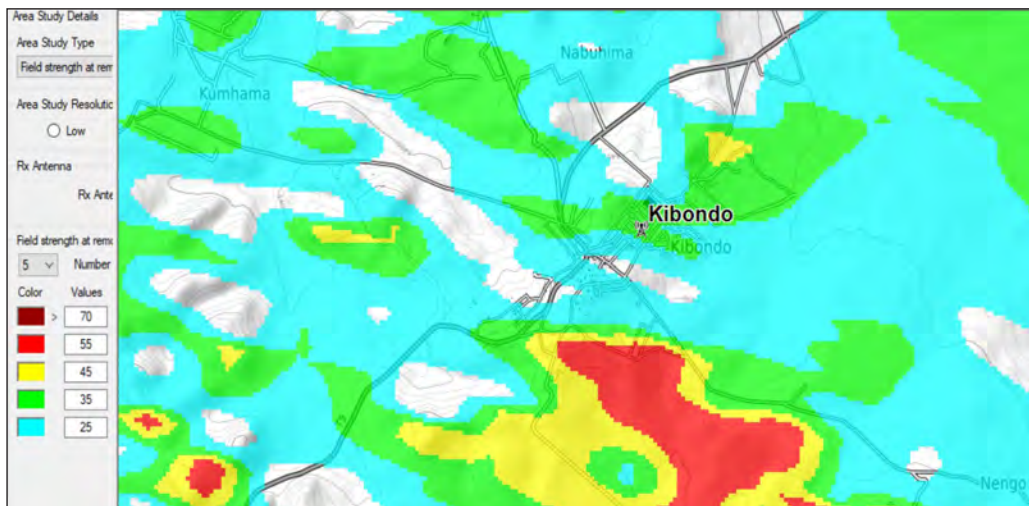
DETERMINING FM RADIO RECEPTION

Radio propagation is the behavior of radio waves as they travel, or are propagated, from one point to another, or into various parts of the atmosphere. Galcom focuses on FM radio and has installed more than 100 low-powered FM stations around the world. FM radio uses line-of-sight transmission, which refers to radio waves which travel directly in a line from the transmitting antenna to the receiving antenna. On the surface of the Earth, line-of-sight propagation is limited by the visual horizon to about 64 km. Land features and climate can affect the shape of an FM station's service area.



Terrain in the vicinity of Kibondo, Tanzania. The terrain in the north is full of obstructive hills; the terrain south of the transmitter is flat and the coverage is good.

For example, on this expansion of Radio Joy in Kibondo Tanzania, Galcom needs to strategically place the new tower, as a mountain may block the signal; a valley may allow the signal to extend further, because the terrain is lower in that direction. "Rain fade" is a term used to describe the decrease of the signal due to moisture in the air. FM stations will often locate on a tall tower or mountaintop to reduce the effects of intervening terrain. Galcom even placed an antenna on a water tower in Poland to ensure it was at the highest point in the city.



Propagation study of Kibondo and vicinity. While green covers most of Kibondo (see color bar, left) there are light blue and white patches where the signal may still be received.

A **Propagation Study** uses a satellite map of the terrain, then factors in the height of the tower, the RF power of the transmitter, and the antenna gain (how directional and focused the signal is), and produces a computer model to predict how far and in what direction the radio signal will travel. Field Technician Dave Casement and volunteer Laszlo Barany create these reports to optimize the reach of each station so Galcom can share the Gospel with the greatest number of people.



"Spending of funds is confined to programs and projects approved by the organization. Each restricted contribution designated toward such an approved program or project will be used as designated with the understanding that when the need for such a program or project has been met or cannot be completed for any reason determined by the organization, the remaining restricted contributions will be used where needed most. Gifts are acknowledged and receipted with an official receipt for income tax purposes."

GALCOMINTERNATIONALINC.

Newsletter is published quarterly.
 Visit us online at galcom.org.
 Phone: 905-574-4626 or Toll Free: 1-877-242-5266
 E-mail: galcom@galcom.org
 In the USA Phone: 813-933-8111
 US Office E-mail: info@galcomusa.com